



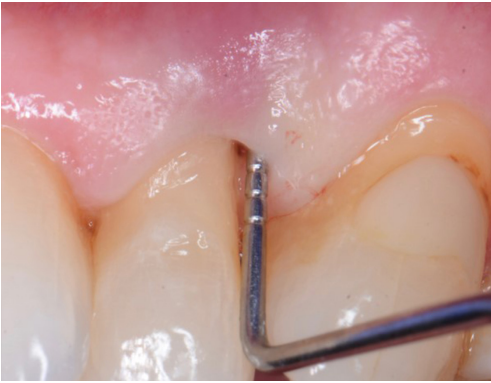
# CASE STUDIES

**ethOss**<sup>®</sup>

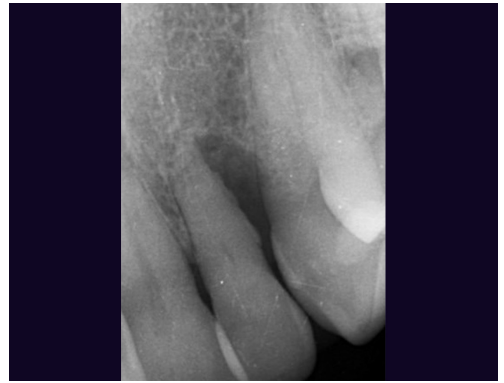
Grow  
Stronger<sup>®</sup>

EthOss Regeneration Ltd  
8 Ryefield Court, Silsden, BD20 0DL, UK  
[www.ethoss.dental](http://www.ethoss.dental) | [info@ethoss.dental](mailto:info@ethoss.dental)

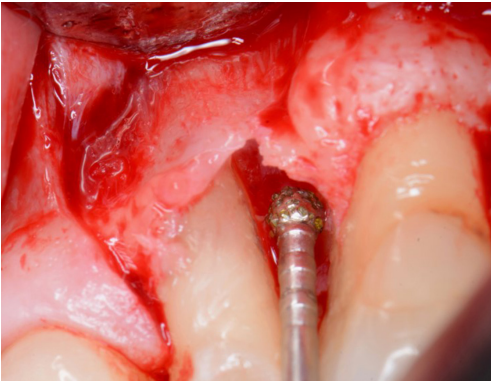
# PERIODONTAL GRAFTING



1. Probing showed an 8mm distal pocket



2. Radiograph shows large distal bone loss to the apex of the tooth, which is grade 3 mobile



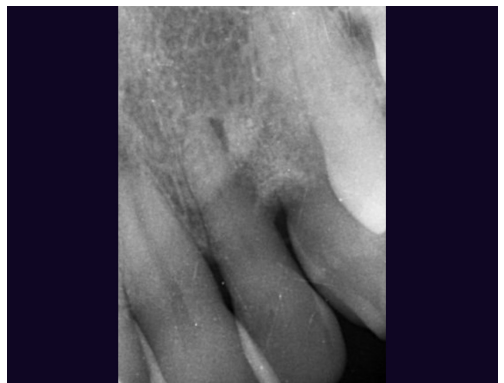
3. Flap is raised and bone defect was cleaned with EthOss® Degranulation Burs



4. Site grafted with EthOss bone grafting material



5. Flap is sutured closed

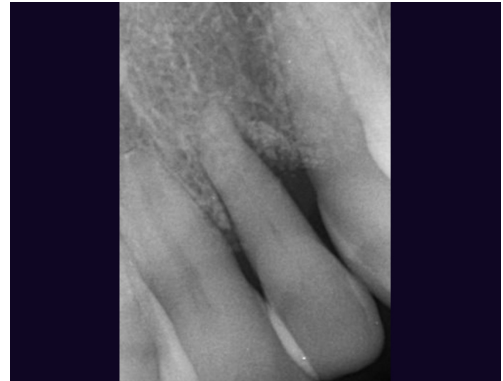


6. Radiograph showing site now grafted with EthOss bone grafting material

# PERIODONTAL GRAFTING



7. Loaded at 4 months - very solid but consideration around whether a better flap design could have improved soft tissue



8. Loaded at 4 months - radiograph showing new bone regeneration



# GROW STRONGER<sup>®</sup>

## USEFUL RESOURCES

### RECOMMENDED CLINICAL PROTOCOL

Clinical study showcasing recommended clinical protocol for EthOss bone grafting material

[Download](#)

### SURGICAL GUIDELINES

The official recommended guide on how to use EthOss bone grafting material

[Download](#)

### HOW TO MIX ETHOSS BONE GRAFTING MATERIAL

Explainer video

[Watch](#)