



# CASE STUDIES

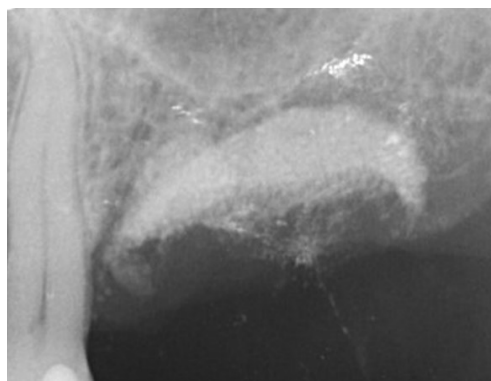
**ethoss**<sup>®</sup> *Grow  
Stronger\_*

Ethoss Regeneration Ltd  
8 Ryefield Court, Silsden, BD20 0DL, UK  
[www.ethoss.dental](http://www.ethoss.dental) | [info@ethoss.dental](mailto:info@ethoss.dental)

# SOCKET GRAFT AND SINUS AUGMENTATION



1. Roots prior to removal.



2. Roots extracted, site left to heal for 3 weeks allowing soft tissue closure. Site cleaned with Degranulation Burs.



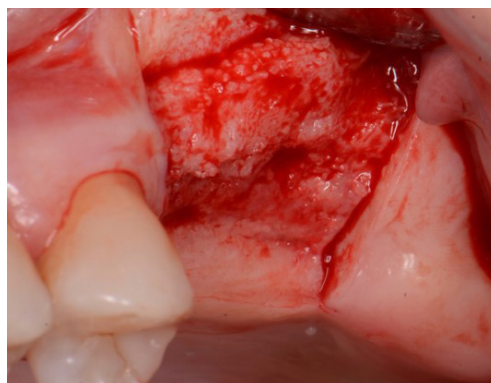
3. 10 weeks post socket grafted with EthOss.



4. 10 weeks post socket graft - healthy soft tissue.

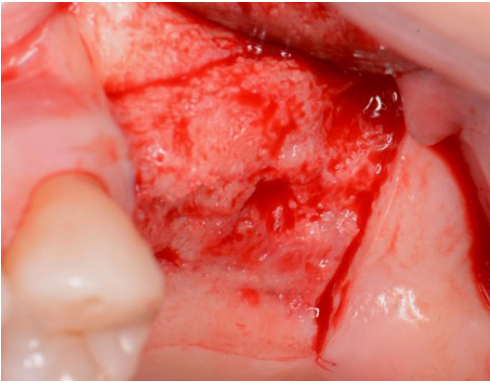


5. 10 weeks post socket graft - healthy soft tissue.

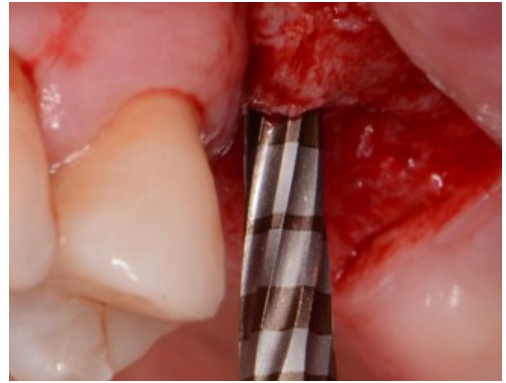


6. Flap raised showing new host regenerated bone.

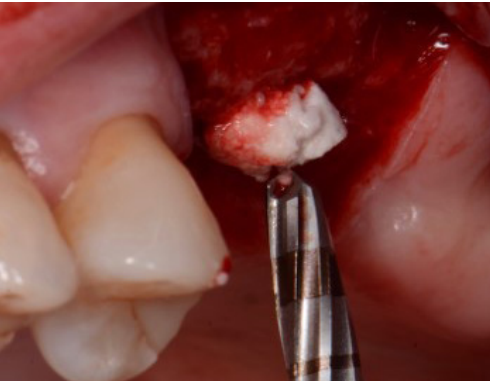
# SOCKET GRAFT AND SINUS AUGMENTATION



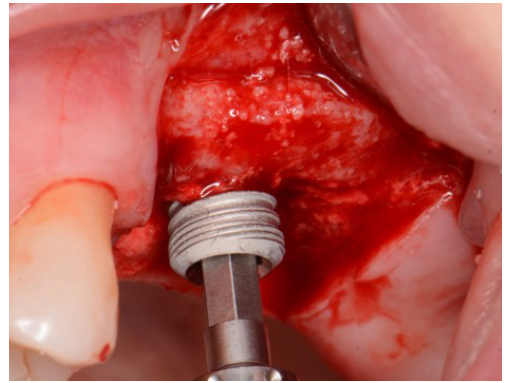
7. Flap raised showing new host regenerated bone.



8. Densah® driving a drier mix of EthOss into the sinus.



9. Densah® driving a drier mix of EthOss into the sinus.



10. Placement of implant.



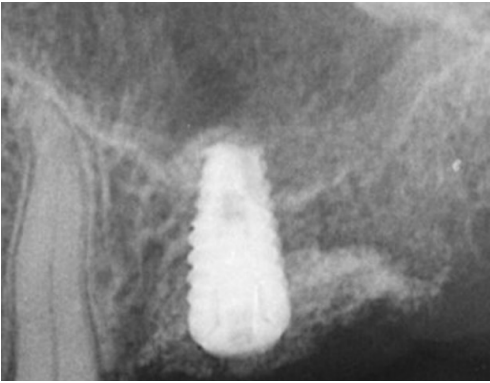
11. Placement of implant.



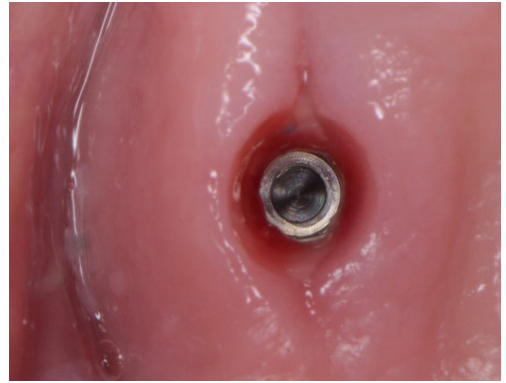
12. Additional grafting with drier mix of EthOss.



# SOCKET GRAFT AND SINUS AUGMENTATION



13. Grafted and implant placed.



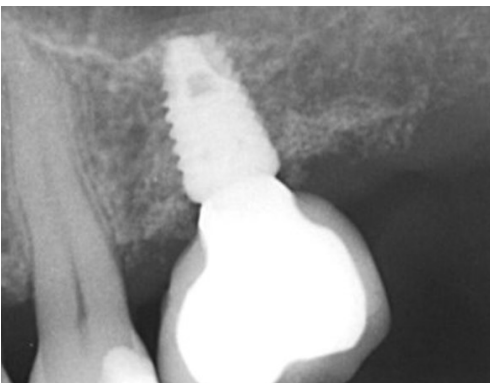
14. Loaded 10 weeks after placement.



15. Loaded 10 weeks after placement.



16. Loaded after 10 weeks placement.



17. 3 months loaded.



18. 1 year loaded



# GROW STRONGER

## USEFUL RESOURCES

### RECOMMENDED CLINICAL PROTOCOL

*Clinical study showcasing recommended clinical protocol for EthOss*

Download

### SURGICAL GUIDELINES

*The official recommended guide on how to use EthOss*

Download

### HOW TO MIX ETHOSS

*Explainer video*

Watch